

Proform



Spring 17





Picasso™

Italian Milled Micro Fiber

Absorbs and Delivers Paint Superbly, Resists Matting With Virtually No Shedding!

Thermal Fused Core Is Both Solvent and Water Resistant!

"Built For the BEST Painters"

Durable Chrome Plated Steel Frame Holds Up To Heavy Loads!

Patented
HEADLOCK
DISPOSABLE ROLLER CORE

Patented Core Locks Securely in Place and Won't 'Creep' Off During Use

Threaded End For Extension

Contoured, Soft Grip Handle - Easy on the Hands

Once again, Proform has not only changed, but challenged the norm of product design in the painting industry. It is the signature of the company to **NOT** follow but lead.

The Picasso™ roller frame incorporates patented innovations that allow painters the freedom to paint accurately and quickly. It reduces prep work, time and labor costs. The frame will take the best and worst professionals have to offer and continue to 'roll on'.

Proform understands the need for quality materials that perform to the standards professionals need. The Picasso roller cover employs Italian fiber milled to perfection and thermally adhered to a long lasting core. With proper care, this cover will last job after job

Once you have gone 'Picasso', it is hard to accept anything but.



PIC-ROL-3/8 - Picasso® Roller
 9x1 1/2x3/8 - Single; Orange w/ grey stripe - Italian Microfiber
 UPC - 758598011570



PIC-ROL-1/2 - Picasso® Roller
 9x1 1/2x1/2 - Single; Orange w/ grey stripe - Italian Microfiber
 UPC - 758598011587



PIC-ROL-3/8-2PK - Picasso® Roller
 9x1 1/2x3/8 - 2pk Orange w/ grey stripe - Italian Microfiber
 UPC - 758598011594



PIC-ROL-1/2 - 2PK - Picasso® Roller
 9x1 1/2x1/2 - 2pk Orange w/ grey stripe - Italian Microfiber
 UPC - 758598011600



PIC-ROL-1/2-12 - Picasso® Roller
 12x1 1/2x1/2 - Single, Orange w/ grey stripe - Italian Microfiber
 UPC - 758598011655



PIC-ROL-3/4-12 - Picasso® Roller
 12x1 1/2x3/4 - Single, Orange w/ grey stripe - Italian Microfiber
 UPC - 758598011662



PIC-ROL-1/2-18 - Picasso® Roller
 18x1 1/2x1/2 - Single, Orange w/ grey stripe - Italian Microfiber
 UPC - 758598012164



PIC-ROL-3/4-18 - Picasso® Roller
 18x1 1/2x3/4 - Single, Orange w/ grey stripe - Italian Microfiber
 UPC - 758598012171

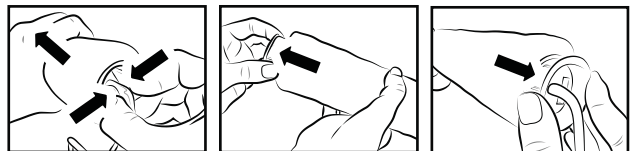
"Built For
 the BEST Painters"
Picasso™



PIC-ROL-FRAME - Picasso® Roller Frame
 9x1 1/2x3/8 Picasso® Roller with 2 Headlock® core
 UPC - 758598011563



PIC-ROL-CORE-4PK
Picasso® Headlock® core replacements - 4pk
 UPC - 758598011617



HEADLOCK™ and the HEADLOCK symbol are marks of Coral Tools Ltd and used under license. UK patent number 2522126 with international patents pending. Patent owner Coral Tools Ltd. All rights reserved.



CONTRACTOR SERIES

The affordable, dependable line of applicators from Proform built with the contractor and crew in mind. The Contractor series employs a beautifully woven fiber roller with a phenolic core, completely solvent resistant. The quality is here at a price that can't be matched.

White Woven Roller



C-ROL-3/8

*Contractor Roller 9x1 1/2x3/8 - Single; White Woven
UPC - 758598011679*



C-ROL-3/8-3PK

*Contractor Roller 9x1 1/2x3/8 - 3pk; White Woven
UPC - 758598011693*



C-ROL-1/2

*Contractor Roller 9x1 1/2x1/2 - Single; White Woven
UPC - 758598011686*



C-ROL-1/2-3PK

*Contractor Roller 9x1 1/2x1/2 - 3pk; White Woven
UPC - 758598011709*

VOID™



Yellow Polyester Roller



E-ROL-FRAME- Void Roller Frame
UPC -758598011716

The Void™ assortment of rollers and frames is Proform's 'price conscious' offering to painters of every level. Built with performance in mind, the Void series gets the job done right with precision and affordability.



E-ROL-3/8 - Void Roller 9x1 1/2x3/8 Yellow Polyester Roller - Single
UPC - 758598011723



E-ROL-3/8-3PK - Void Roller 9x1/2x3/8 Yellow Polyester Roller - 3 pk
UPC - 758598011747



E-ROL-1/2 - Void Roller 9x1 1/2 x 1/2 Yellow Polyester Roller - Single
UPC - 758598011730



E-ROL-1/2-3PK - Void Roller 9x1/2x1/2 Yellow Polyester Roller - 3 pk
UPC - 758598011754



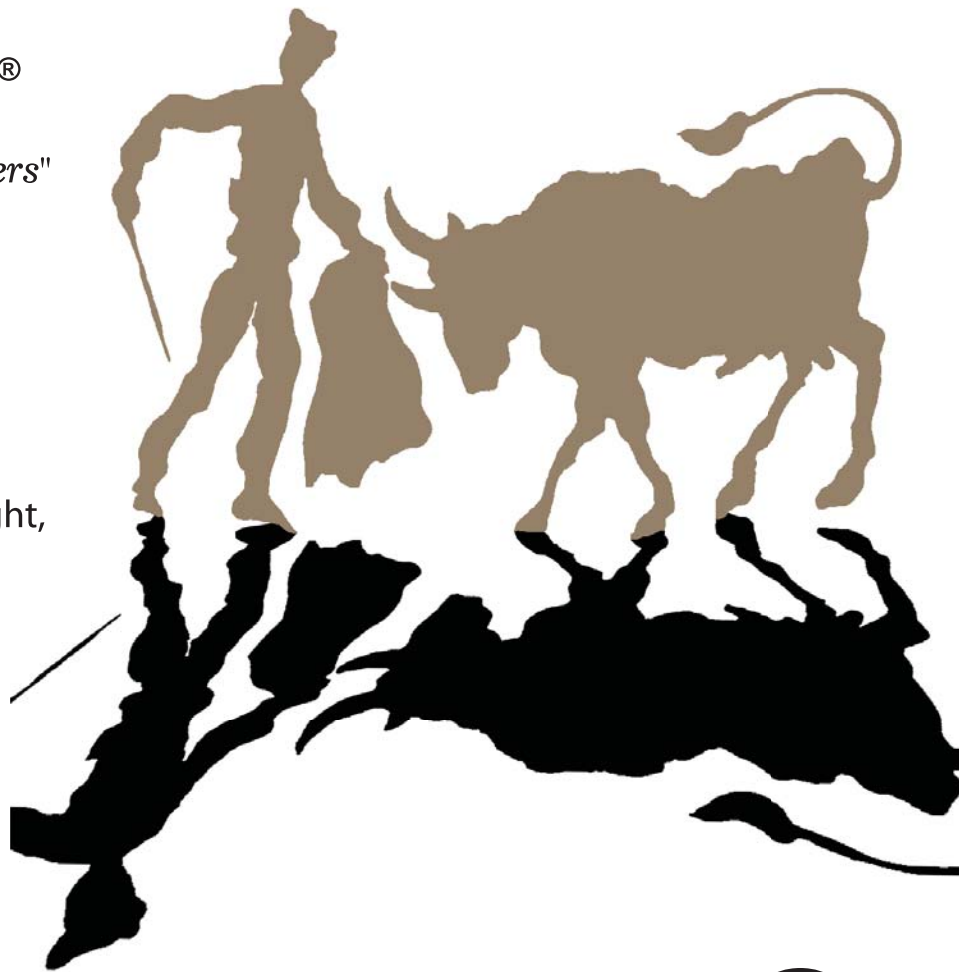
Dicassa®

"Built For the BEST Painters"

Stylus™

Advantage Nylon Filament Blend

The Picasso Stylus utilizes a lightweight, round 'European' style handle built specifically for increased, precise control when cutting or detail work.



NEW!

PIC 23
ROUND HANDLE
CHISEL TIP

PIC 23
ROUND HANDLE
CHISEL TIP

NEW!

PIC 24
ROUND HANDLE
STRAIGHT CUT

Model Dia. Length Out

ROUND HANDLE - CHISEL TIP

PIC23-10mm	1/2"	2"
PIC23-17mm	5/8"	2"
PIC23-18mm	3/4"	2 3/8"
PIC23-21mm	7/8"	2 5/8"

UPC

758598011563
758598011242
758598011297
758598011341

ROUND HANDLE - STRAIGHT CUT

PIC24-14mm	9/16"	2"
PIC24-16mm	5/8"	2 1/8"
PIC24-19mm	3/4"	2 7/16"

758598011396
758598011440
758598011495

HARDLINE™ "No Drip"
Interior Construction
patented



*Additional
Epoxy*
Holds Handle to
Ferrule Securely
and Fills Gap
Between Handle
and Brush Knot...
NO DRIP!

*Primary
Epoxy*
Binds Filament

Picasso®
"Built For the BEST Painters"

MINOTAUR™

Advantage PBT Filament Blend

The Picasso Minotaur utilizes a 'European' style handle for increased control and larger reservoir for holding paint. The oval ferrule and chiseled angel cut allow for precise cutting and detail work.



World's FIRST
 'Angled Oval'
 Applicator!



NEW!

PIC 21
 BULB HANDLE
 OVAL FERRULE
 ANGLED CUT

NEW!

PIC 22
 BULB HANDLE
 STRAIGHT CUT

Model Size UPC

**BULB HANDLE - OVAL FERRULE
 ANGLED CUT**

PIC21-1.5	1.5"	758598011006
PIC21-2.0	2"	758598011037
PIC21-2.5	2.5"	758598011068
PIC21-3.0	3"	758598011099

BULB HANDLE - STRAIGHT CUT

PIC22-1.5	1.5"	758598011129
PIC22-2.0	2"	758598011150
PIC22-2.5	2.5"	758598011181
PIC22-3.0	3"	758598011211

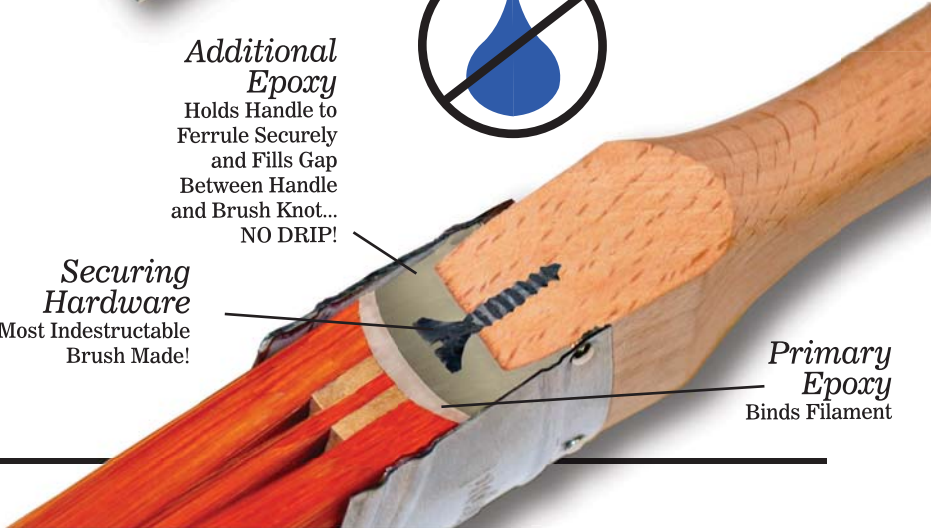
HARDLINE™ "No Drip"
 Interior Construction
 patented



Additional Epoxy
 Holds Handle to Ferrule Securely and Fills Gap Between Handle and Brush Knot...
NO DRIP!

Securing Hardware
 Most Indestructible Brush Made!

Primary Epoxy
 Binds Filament





Dicasso®

"Built For the BEST Painters"

HARDLINE™ "No Drip"
Interior Construction
patented



World's FIRST
'Angled Oval'
Applicator!

Acid Dipped Tips
Hand chiseled so paint engages the wall and lays out perfectly

Advantage PBT™
Proprietary Filament Blend for Easy Paint Application and Cleaning

ALL Competitor Constructiton
This is the problem area where liquids collect and drip. Notice no reinforcement epoxy, so the ferrule will loosen over time

Securing Hardware
Most Indestructable Brush Made!

Additional Epoxy
Holds Handle to Ferrule Securely and Fills Gap Between Handle and Brush Knot...
NO DRIP!

Primary Epoxy
Binds Filament

Model

Size UPC

STANDARD HANDLE - OVAL FERRULE - ANGLED CUT

PIC1-1.5	1.5"	758598008020
PIC1-2.0	2"	758598008037
PIC1-2.5	2.5"	758598008044
PIC1-3.0	3"	758598008051

BEAVER TAIL HANDLE - STRAIGHT CUT

PIC2-2.5	2.5"	758598008082
PIC2-3.0	3"	758598008099
PIC2-4.0	4"	758598008105

BEAVER TAIL HANDLE - OVAL FERRULE - ANGLED CUT

PIC3-2.5	2.5"	758598008068
PIC3-3.0	3"	758598008075

STANDARD HANDLE - STRAIGHT CUT

PIC4-1.5	1.5"	758598008297
PIC4-2.0	2"	758598008303
PIC4-2.5	2.5"	758598008310
PIC4-3.0	3"	758598008327

SHORT HANDLE - ANGLED CUT

PIC5-1.5	1.5"	758598008419
PIC5-2.0	2"	758598008426
PIC5-2.5	2.5"	758598008433

SASH HANDLE - OVAL FERRULE - ANGLED CUT

PIC6-1.0	1"	758598009003
PIC6-1.5	1.5"	758598009010
PIC6-2.0	2"	758598009027
PIC6-2.5	2.5"	758598009034
PIC6-3.0	3"	758598009051



The '**CHISEL**' **PICASSO**® - Firm Blend PBT™ Filament Blend
 A stiffer blend of PBT filament for all applications

WORLDS FIRST
Angled
OVAL
 CUTTING & TRIM

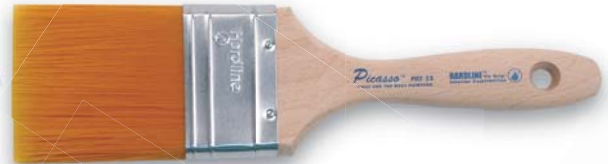
Model Size UPC
STANDARD HANDLE - OVAL FERRULE - ANGLED CUT

PIC11-1.5	1.5"	758598009157
PIC11-2.0	2"	758598009188
PIC11-2.5	2.5"	758598009218
PIC11-3.0	3"	758598009249



BEAVER TAIL HANDLE - STRAIGHT CUT

PIC12-2.5	2.5"	758598009270
PIC12-3.0	3"	758598009300
PIC12-4.0	4"	758598009331



BEAVER TAIL HANDLE - OVAL FERRULE - ANGLED CUT

PIC13-2.5	2.5"	758598009362
PIC13-3.0	3"	758598009393



STANDARD HANDLE - STRAIGHT CUT

PIC14-1.5	1.5"	758598009423
PIC14-2.0	2"	758598009454
PIC14-2.5	2.5"	758598009485
PIC14-3.0	3"	758598009515



SHORT HANDLE - ANGLED CUT *The Bull*™

PIC15-1.5	1.5"	758598009546
PIC15-2.0	2"	758598009577
PIC15-2.5	2.5"	758598009607



SASH HANDLE - OVAL FERRULE - ANGLED CUT

PIC16-1.0	1"	758598009638
PIC16-1.5	1.5"	758598009669
PIC16-2.0	2"	758598009690
PIC16-2.5	2.5"	758598009720
PIC16-3.0	3"	758598009751



The Picasso® Bull™ Counter Top Display

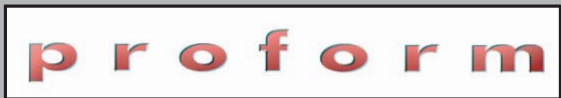
- *Self Display
 - *Great Impulse Buy
 - *Better Margins
 - *Perfect Fit For Limited Areas
- 10x8x7



UPC
 758598008983

QTY
 5 - PIC5 1.5"
 5 - PIC5 2.0"
 5 - PIC5 2.5"

PIC5 DISPLAY



CONTRACTOR

PBT/PET Filament Blend

Model Size UPC

STANDARD HANDLE - ANGLED CUT

CI.5AS	1.5"	758598001793
C2.0AS	2"	758598001809
C2.5AS	2.5"	758598001816
C3.0AS	3"	758598001823
C3.5AS	3.5"	758598002264



STANDARD HANDLE - STRAIGHT CUT

CI.5S	1.5"	758598004299
C2.0S	2"	758598004305
C2.5S	2.5"	758598004312
C3.0S	3"	758598004329



SASH HANDLE - ANGLED CUT

CSI.0AS	1"	758598002011
CS1.5AS	1.5"	758598002028
CS2.0AS	2"	758598002035
CS2.5AS	2.5"	758598002042
CS3.0AS	3"	758598002219



BEAVER TAIL HANDLE - STRAIGHT CUT

CI.0BS	1"	758598001731
C1.5BS	1.5"	758598001748
C2.0BS	2"	758598001755
C2.5BS	2.5"	758598001762
C3.0BS	3"	758598001779
C4.0BS	4"	758598001786



OVAL FERRULE/BEAVER TAIL HANDLE STRAIGHT CUT

C02.0S	2"	758598002059
C02.5S	2.5"	758598002066
C03.0S	3"	758598002073
C03.5S	3.5"	758598002202



WALL FERRULE/BEAVER TAIL HANDLE STRAIGHT CUT

CM3.0S	3"	758598002271
CM4.0S	4"	758598002295



SHORT HANDLE - ANGLED CUT

CR1.5AS	1.5"	758598002080
CR2.0AS	2"	758598002097
CR2.5AS	2.5"	758598002103





CONTRACTOR

STIFF BRUSH™ PBT/PET Stiff Filament Blend

Model Size UPC

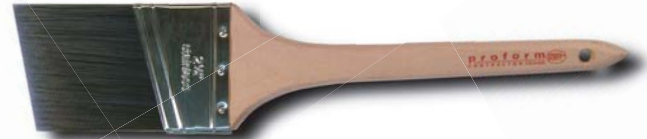
STANDARD HANDLE - ANGLED CUT

C1.5AVS	1.5"	758598000597
C2.0AVS	2"	758598004374
C2.5AVS	2.5"	758598004381
C3.0AVS	3"	758598004398



SASH HANDLE - ANGLED CUT

CS1.0AVS	1"	758598008440
CS1.5AVS	1.5"	758598008471
CS2.0AVS	2"	758598004404
CS2.5AVS	2.5"	758598004411
CS3.0AVS	3"	758598004428



OVAL FERRULE/BEAVER TAIL HANDLE STRAIGHT CUT

C02.5VS	2.5"	758598004435
C03.0VS	3"	758598004442



BEAVER TAIL HANDLE - STRAIGHT CUT

CB2.5VS	2.5"	758598007719
CB3.0VS	3"	758598004459
CB4.0VS	4"	758598007726



BLAZE

Quality Materials
Unbelievable Results
Affordable Prices



Model	Size	UPC
STANDARD HANDLE - OVAL - ANGLED CUT		
C1.5AO	1.5"	758598010146
C2.0AO	2"	758598010177
C2.5AO	2.5"	758598010207
C3.0AO	3"	758598010238

STANDARD HANDLE - OVAL - STRAIGHT CUT		
C1.5SO	1.5"	758598010269
C2.0SO	2"	758598010290
C2.5SO	2.5"	758598010320
C3.0SO	3"	758598010351

BEAVER TAIL HANDLE - OVAL - ANGLED CUT		
CB1.0AO	1"	758598009966
CB1.5AO	1.5"	758598009997
CB2.0AO	2"	758598010023
CB2.5AO	2.5"	758598010054
CB3.0AO	3"	758598010085
CB4.0AO	4"	758598010115

SASH HANDLE - OVAL - ANGLED CUT		
CS1.0AO	1"	758598010382
CS1.5AO	1.5"	758598010412
CS2.0AO	2"	758598010443
CS2.5AO	2.5"	758598010474
CS3.0AO	3"	758598010504

ROUND HANDLE - CHISEL TIP		
BLAZE23-10MM	10mm	758598012256
BLAZE23-17MM	17mm	758598012300



WORLDS FIRST
Angled
OVAL
CUTTING & TRIM

The worlds' first
'Angled Oval' brush
creates a huge reservoir
in the brush head which allows
the painter to cover large areas and
also cut in trim and detail with precision.



A sensible choice for price conscious retailers

MODEL SIZE UPC

STANDARD HANDLE - ANGLED CUT

E1.5AS VOID	1.5"	758598008471
E2.0AS VOID	2.0"	758598008488
E2.5AS VOID	2.5"	758598008495
E3.0AS VOID	3.0"	758598008501

STANDARD HANDLE - STRAIGHT CUT

E1.5S VOID	1.5"	758598008518
E2.0S VOID	2.0"	758598008525
E2.5S VOID	2.5"	758598008532
E3.0S VOID	3.0"	758598008549

BEAVER TAIL HANDLE - STRAIGHT CUT

EB2.0S VOID	2.0"	758598008440
EB2.5S VOID	2.5"	758598008457
EB3.0S VOID	3.0"	758598008464

SASH HANDLE - ANGLED CUT

ES1.0AS VOID	1.0"	758598008556
ES1.5AS VOID	1.5"	758598008563
ES2.0AS VOID	2.0"	758598008570
ES2.5AS VOID	2.5"	758598008587
ES3.0AS VOID	3.0"	758598008594



**BLOCK HEAD™ - CONTRACTOR
LARGE AREA STAIN BRUSHES**

Model Size UPC

BLOCK STAINER HANDLE - OIL BASE

- PBT/China White Blend

CBH5.0B	5"	758598004343
CBH6.0B	6"	758598004350
CBH7.0B	7"	758598004367

BLOCK STAINER HANDLE - WATER BASE

- PBT/PET Blend

CBH5.0L	5"	758598008006
CBH6.0L	6"	758598008013



CHINA WHITE CONTRACTOR SERIES - White Natural Bristle

Model Size UPC

STANDARD HANDLE - ANGLED CUT

C1.5AX	1.5"	758598002318
C2.0AX	2"	758598002325
C2.5AX	2.5"	758598002332
C3.0AX	3"	758598002349



SASH HANDLE - ANGLED CUT

CS1.0AX	1"	758598002417
CS1.5AX	1.5"	758598002424
CS2.0AX	2"	758598002431
CS2.5AX	2.5"	758598002448
CS3.0AX	3"	758598002455



BEAVER TAIL HANDLE - STRAIGHT CUT

CB1.0X	1"	758598002356
CB1.5X	1.5"	758598002363
CB2.0X	2"	758598002370
CB2.5X	2.5"	758598002387
CB3.0X	3"	758598002394
CB4.0X	4"	758598002400



PROFESSIONAL ERGONOMIC - PBT/PET Filament Blend

Model Size UPC

ERGONOMIC HANDLE - ANGLED CUT

PI.5AS	1.5"	758598001694
P2.0AS	2"	758598001700
P2.5AS	2.5"	758598001717
P3.0AS	3"	758598001724



ERGONOMIC HANDLE - STRAIGHT CUT

PI.5S	1.5"	758598001656
P2.0S	2"	758598001663
P2.5S	2.5"	758598001670
P3.0S	3"	758598001687

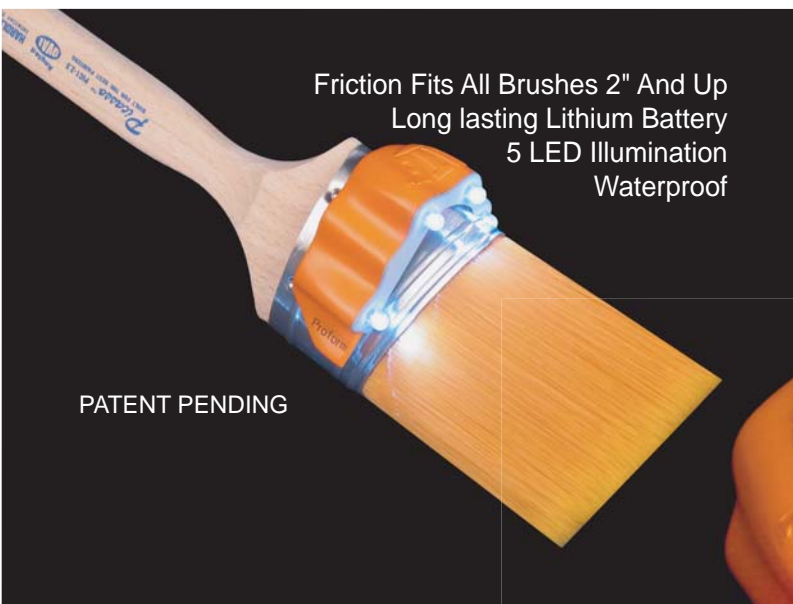


NAILSET/CENTER PUNCH



Ergonomic Nailwing™ holder allows the user to manipulate the tool more efficiently and safely. Available in: 1/32", 2/32", 3/32" and Center Punch.

Model	Description	UPC
N-4B	All four items	758598001601
N-132	1/32" Nailset	758598001618
N-232	2/32" Nailset	758598001625
N-332	3/32" Nailset	758598001632
N-CP	Center Punch	758598001649



LED Type: 5mm LED
Qty: 5pcs
Beam Angle: 90 degree
 (Narrow angle common is 120 degree)

Color Temp: 6500K
 (cool white)

Brightness: 6lm/pcs

Battery: CR2032 3V
 Lithium Battery (built in)

Battery Life: 20 hours -
 3V 100% brightness
 40 hours -
 2.55V - 80% brightness

Waterproof

The Hi-Lite™ is the first 'Fits All' illumination device for painting those hard to see, dark areas. No need setting up lights, just slip over any ferrule (2" and up) and it's daytime! It's easy on and easy off of any brush!

H - 2.5"
 W - 1.5"
 D - 1.375"



Model **UPC**

Hi-Lite 758598010955

Hi-Lite POP 758598010986

POP - Counter Top Display with
 20 Clam Packed Hi-Lite Units